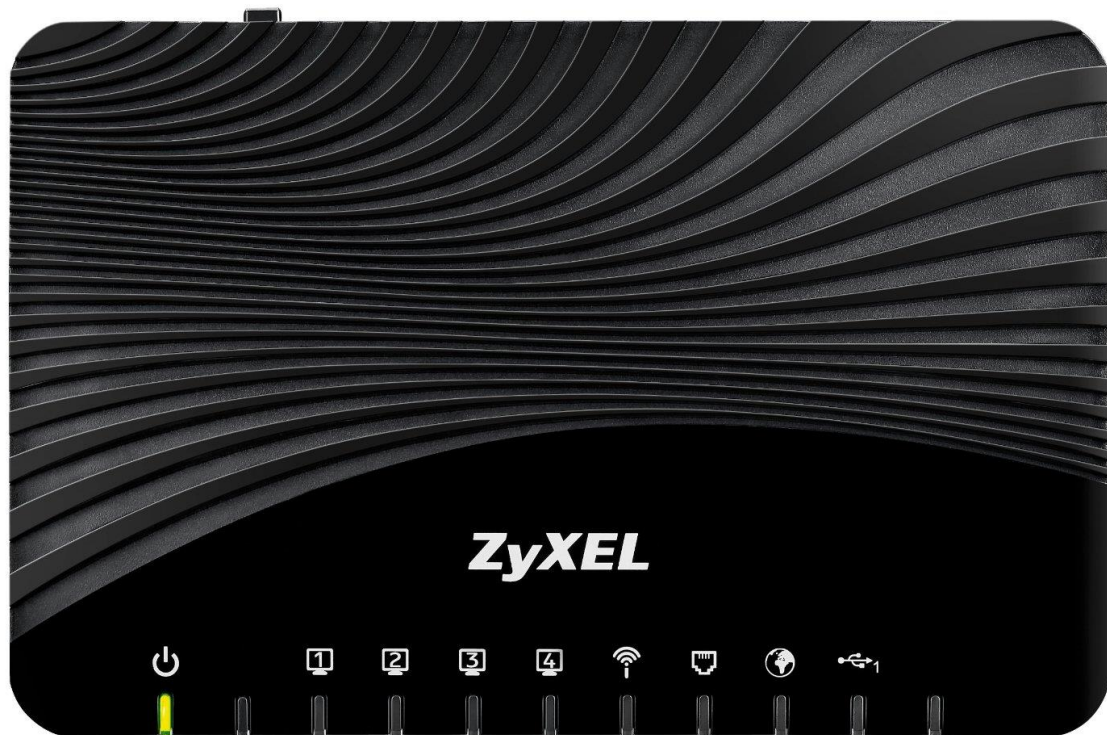


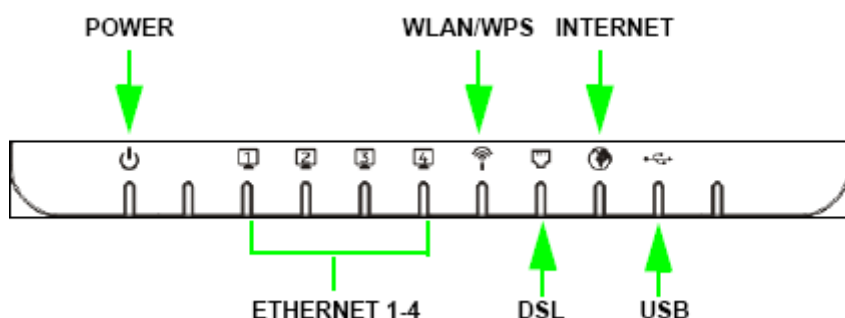
HT ERONET

VDSL modem ZyXel VMG1312-B10A/B30A



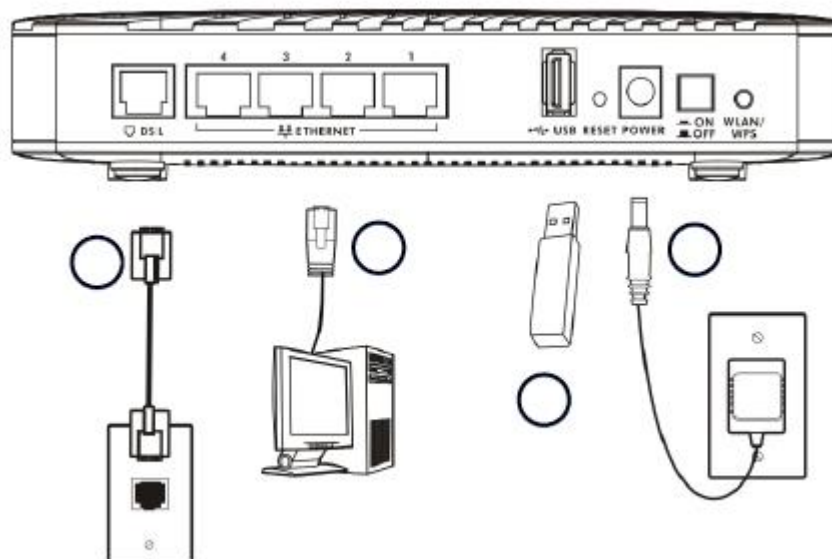
Default Login Details	
LAN IP Address	http://192.168.2.1
User Name	user
Password	1234

Funkcionalnost lampica



- **Power** lampica treperi kratko vrijeme nakon uključivanja modema, a nakon toga svijetli postojano.
- **Ethernet 1, 2 ... 4** lampica svijetli ako je u odgovarajućem portu spojen mrežni UTP kabel između modema i PC/STB klijenta. Lampica treperi ako postoji podatkovni promet na portu.
- **WPS/WLAN** lampica svijetli zelenom bojom kada je WiFi signal uključen, a treperi kada postoji promet preko bežične mreže.
- **DSL** označava VDSL signal i ona svijetli postojano ako signal uredno dolazi do modema.
- **Internet** lampica svijetli kada je modem spojen na Internet i treperi kada postoji Internet promet.
- **USB** lampica svijetli kada se spoji USB uređaj (memory stick, printer, 3G USB adapter) i treperi pri slanju/primanju podataka.

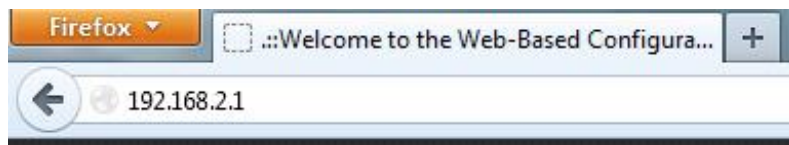
Spajanje uređaja



- **Power** – ulaz na koji se priključuje adapter za napajanje (koristite originalni adapter za napajanje koji dođe u kutiji uz modem i spojite na odgovarajući izvor struje 220V AC)
- **Ethernet 1, 2 ... 4** – ulazi za spajanje računala (usluga pristupa Internetu) ili STB-a (HomeTV usluga) pomoću UTP kabela
- **WPS/WLAN** lampica svijetli zelenom bojom kada je WiFi signal uključen, a treperi kada postoji promet preko bežične mreže
- **DSL** – priključak za telefonski kabel koji se spaja na VDSL djelitelj (splitter)
- **ON/OFF** – prekidač za uključivanje/isključivanje modema
- **USB** – ulaz za spajanje USB memorijske kartice, za spajanje pisača ili za 3G USB adapter (za korištenje 3G USB adaptera potrebna dodatna konfiguracija)
- **WLAN/WPS** – prekidač za uključivanje/isključivanje bežične mreže i spajanje WiFi klijenta pomoću WPS tehnologije
- **RESET** – prekidač za vraćanje modem na tvorničke postavke

Proces konfiguracije putem čarobnjaka za brzu konfiguraciju


Modemu se pristupa putem Internet preglednika tako što se u adresnu traku upiše IP adresa 192.168.2.1 .



Otvara se prozor za pristup modemu. U polje za korisničko ime (username) upišite **user** ,a u polje za lozinku (password) upišite **1234**.

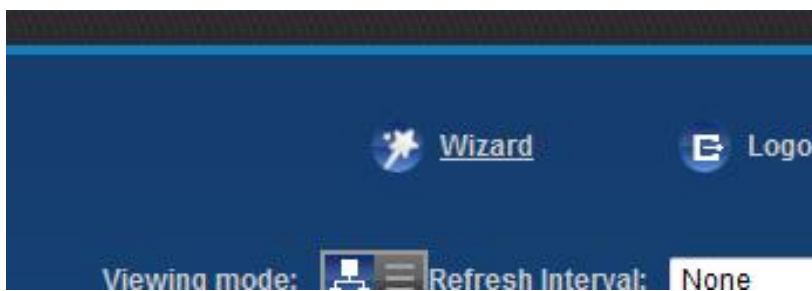
A screenshot of the ZyXEL VMG1312-B10A configuration interface. The page has a dark blue background with the ZyXEL logo at the top left. Below the logo, it says "Welcome" and "Welcome to VMG1312-B10A configuration interface. Please enter username and password to login." There are two input fields: "Username:" with the text "user" and "Password:" with four dots. A "Login" button is located at the bottom right.

U sljedećem koraku možete promijeniti lozinku za pristup ili klikom na **Skip** preskočiti ovu operaciju.



The image shows a ZyXEL web interface for changing a password. On the left is a large padlock icon. The text reads: "Change Password" followed by "It is highly recommended to setup a new password instead of using the default one for security concern." Below this are two input fields: "New Password:" and "Verify New Password:". At the bottom right are two buttons: "Skip" and "Apply".

Nakon što ste pristupili modemu za korištenje čarobnjaka kliknite na opciju **Wizard** koja se nalazi u gornjem desnom dijelu prozora.



Nakon što je pokrenut čarobnjak za brzu konfiguraciju otvara se prozor **Internet Connection** u koji treba upisati ADSL/VDSL korisničko ime i lozinku. Zatim kliknite na **Next**.



Quick Start

Internet Connection

Step 1 of 2

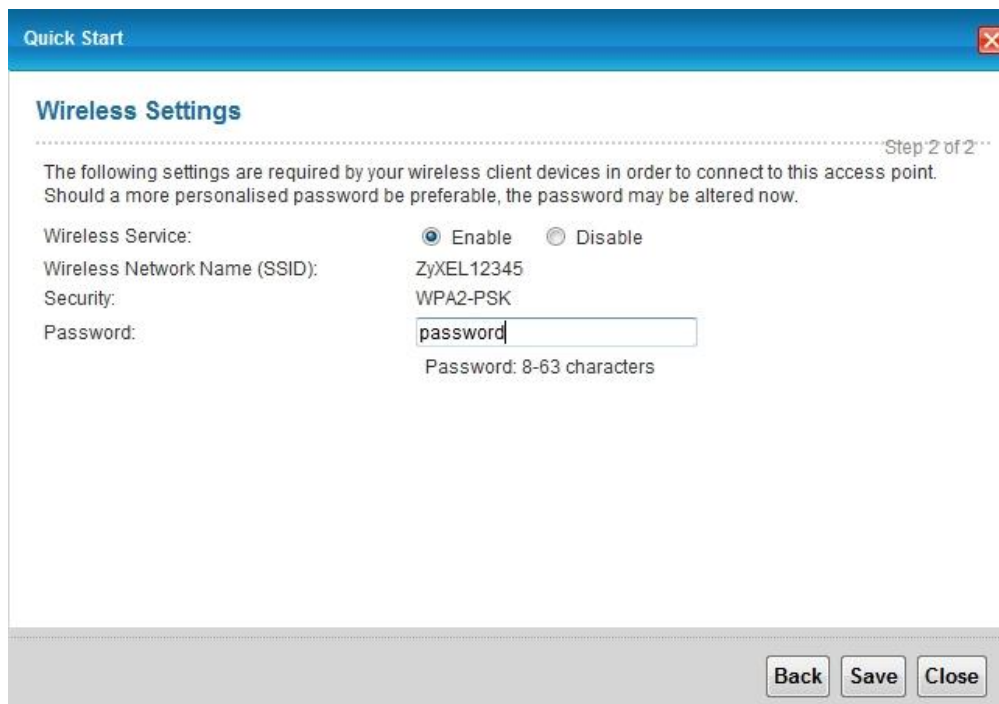
The current connection type is set to PPPoE and requires a username and password to connect.

Username:

Password:

Back Next Close

U sljedećem prozoru se konfiguriraju postavke bežične mreže. Kako biste koristiti bežičnu mrežu za **Wireless Service** odaberite **Enable**, a za **Password** upišite lozinku za pristup bežičnoj mreži. Pod **Wireless Network Name (SSID)** upisan je naziv vaše bežične mreže, a pod **Security** sigurnosni protokol koji se koristi. Kliknite na **Save** za spremanje konfiguracije.



Quick Start

Wireless Settings

Step 2 of 2

The following settings are required by your wireless client devices in order to connect to this access point. Should a more personalised password be preferable, the password may be altered now.

Wireless Service: Enable Disable

Wireless Network Name (SSID): ZyXEL12345

Security: WPA2-PSK

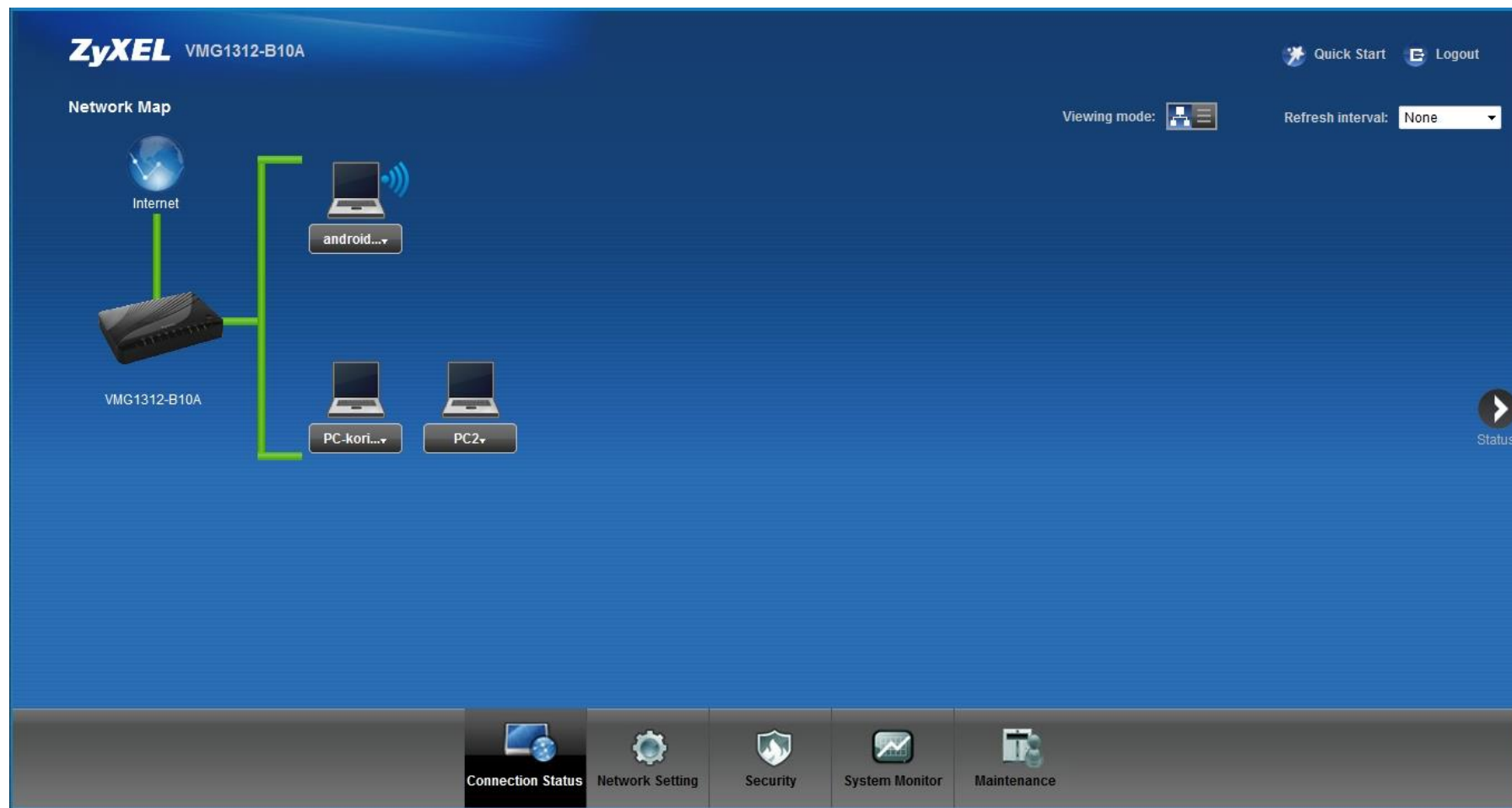
Password:
Password: 8-63 characters

Back Save Close

Ako želite pregledati ili promijeniti bežične postavke modema na početnoj stranici odaberite **Network Setting**, a zatim **Wireless**.

Status modema

Početna **Network Map** stranica prikazuje sve spojene uređaje koji imaju pristup Internetu, bilo da su spojeni UTP kabelom ili bežično.



Odabirom strelice **Status** doći ćete do detaljnih podataka o statusu VDSL linije, Internet konekcije, LAN sučelja, 3G veze itd.

ZyXEL VMG1312-B10A Quick Start Logout

Status Refresh interval: None

Device Information

Host Name: ZyXEL
 Model Number: VMG1312-B10A
 Firmware Version: 1.00(AAJZ.0)C0_140314

WAN Information

- WAN Type: PTM
 - MAC Address: EC:43:F8:C0:D1:F2
 - IP Address: 10.128.255.8 Release
 - IP Subnet Mask: 255.255.255.0
 - Encapsulation: IPoE

- WAN Type: PTM
 - MAC Address: EC:43:F8:C0:D1:F2
 - Encapsulation: Bridge

- WAN Type: PTM
 - MAC Address: EC:43:F8:C0:D1:F3
 - IP Address: 95.158.190.70 Disconnect
 - IPv6 Address: ::
 - IPv6 Link Local Address: ::
 - Encapsulation: PPPoE

LAN Information

- IP Address: 192.168.2.1
 - IP Subnet Mask: 255.255.255.0
 - DHCP: Server
 - MAC Address: EC:43:F8:C0:D1:EE

WLAN Information

- MAC Address: EC:43:F8:C0:D1:F1
 - Status: On
 - SSID: Nik
 - Channel: Auto (Current: 11)
 - Security: WPA2-PSK
 - 802.11 Mode: 802.11b/g/n Mixed
 - WPS: Off

Security

- Firewall: Medium

System Status

System Up Time: 0 days: 5 hours: 46 minutes
 Current Date/Time: 09 Apr 2014 13:41:48
 System Resource:

- CPU Usage: 2.00%
 - Memory Usage: 90%
 - NAT Session Usage: 0%

Interface Status

Interface	Status	Rate
LAN1	Up	100M / Full
LAN2	NoLink	N/A
LAN3	Up	100M / Full
LAN4	Up	100M / Full
WLAN	Up	144.5M
Ethernet WAN	Disabled	N/A / N/A
DSL	Connected	RX:41819/ TX:4258(Kbps)
3G USB	NoDevice	N/A

Network Map
Virtual Device

Connection Status
Network Setting
Security
System Monitor
Maintenance

Podešavanje 3G backup veze

Za korištenje 3G USB adaptera i SIM kartice za pristup Internetu preko 3G mreže pomoću ovoga VDSL modema, potrebno je dodatno konfigurirati samo APN. Odaberite **Network Setting, Broadband**, a zatim **3G Backup** tab. Kako bi omogućili 3G backup vezu za **3G Backup** odaberite **Enable**, a za **APN** upišite odgovarajući APN prema uputama koje možete naći na <http://www.hteronet.ba/privatni-korisnici/mobilna-telefonija/mobilni-internet/>

Broadband

Broadband 3G Backup Advanced 802.1x Ethernet WAN

Whenever the WAN connection is down, 3G Backup takes over the job and keeps you online. It is valid when a 3G USB dongle is attached to the device and proper settings are configured. You may consult your 3G service provider for the following settings.

General

3G Backup Enable Disable (settings are invalid when disabled)

Trigger by ETHER WAN Down (trigger 3G backup when physical link of primary WAN is down)

Ping Check Enable Disable

Check Cycle : Every (5~30 Sec.)

Consecutive Fail : (2~5 times)

Ping Default Gateway

Ping the Host (Host Name or IP address)

Note:
Primary WAN is not in service when ping failed after consecutive times.

3G Connection Settings

Card description : N/A

Username : (Optional)

Password : (Optional)

Authentication Method: AUTO ▾

PIN : (Optional)(Only for unlock PIN next time)
(PIN remaining authentication times: N/A)

Dial string : *99#

APN :

Connection : Nailed UP ▾