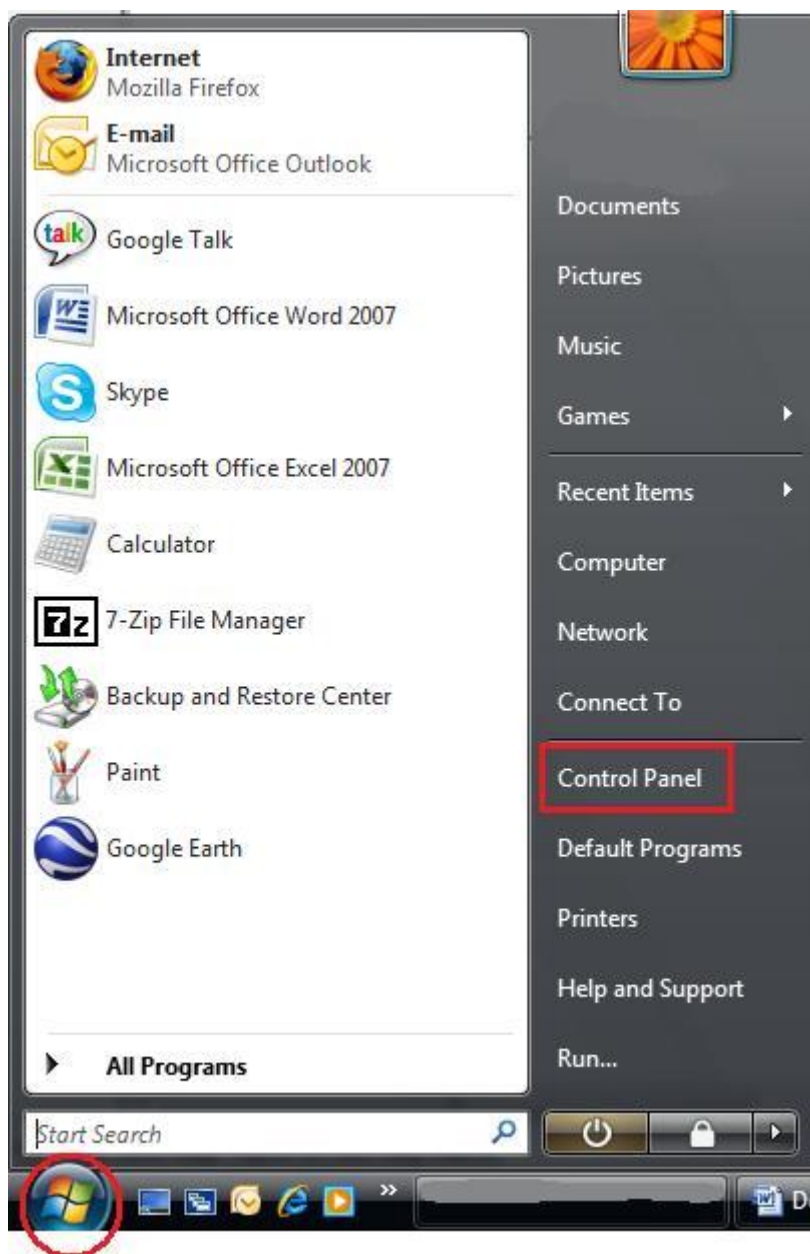




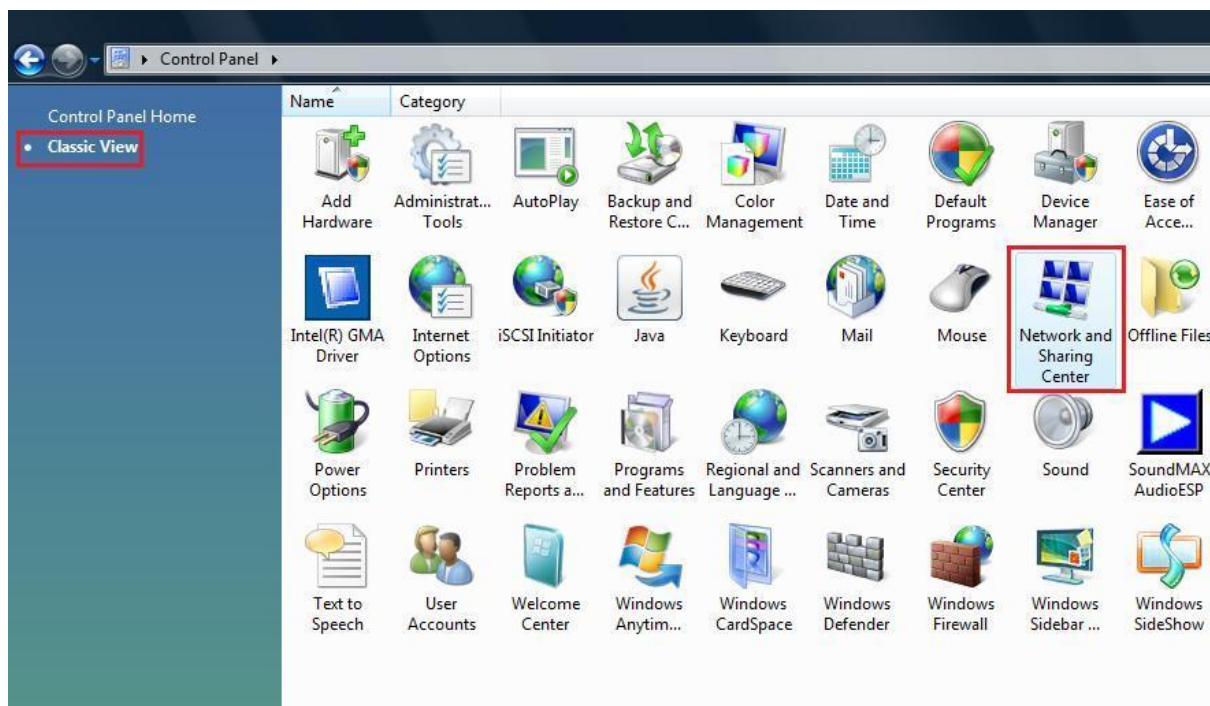
**Windows VISTA**  
Kreiranje ADSL konekcije

## Kreiranje ADSL konekcije (Windows VISTA)

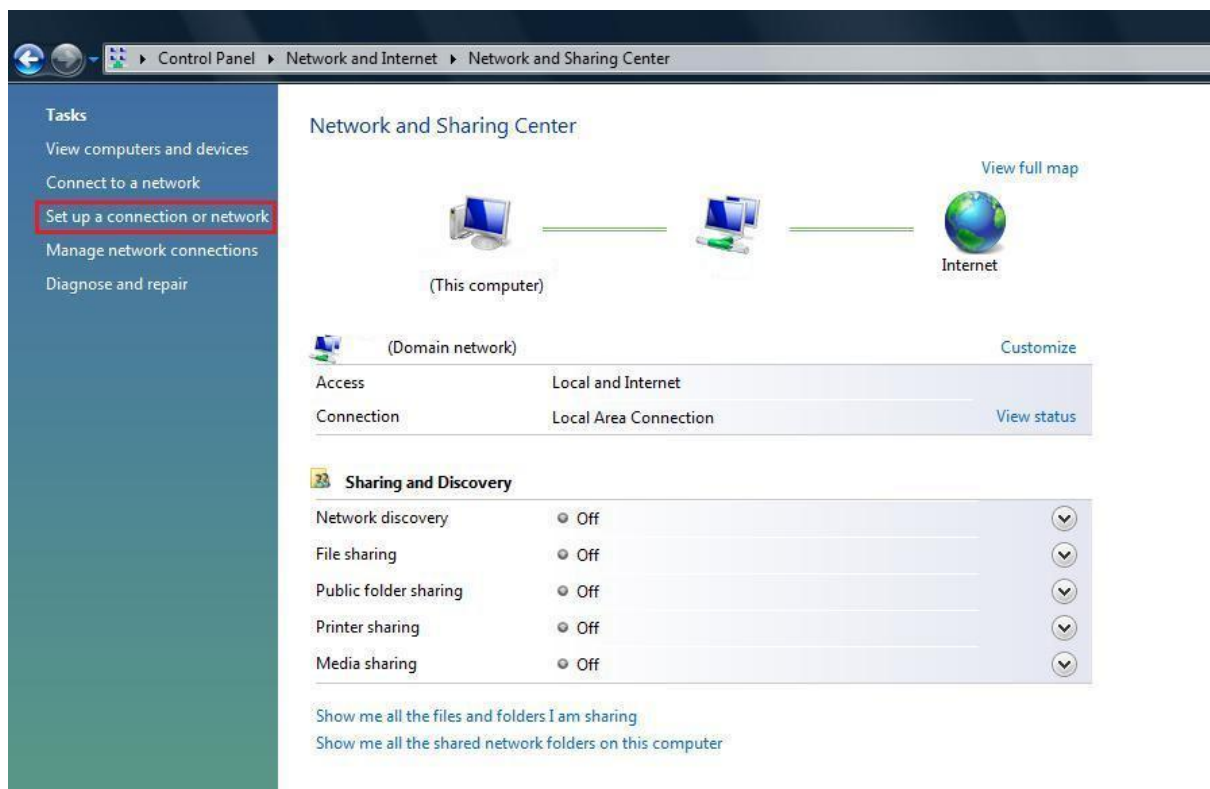
Potrebno je otići na **Start→Control Panel (Upravljačka ploča)**:



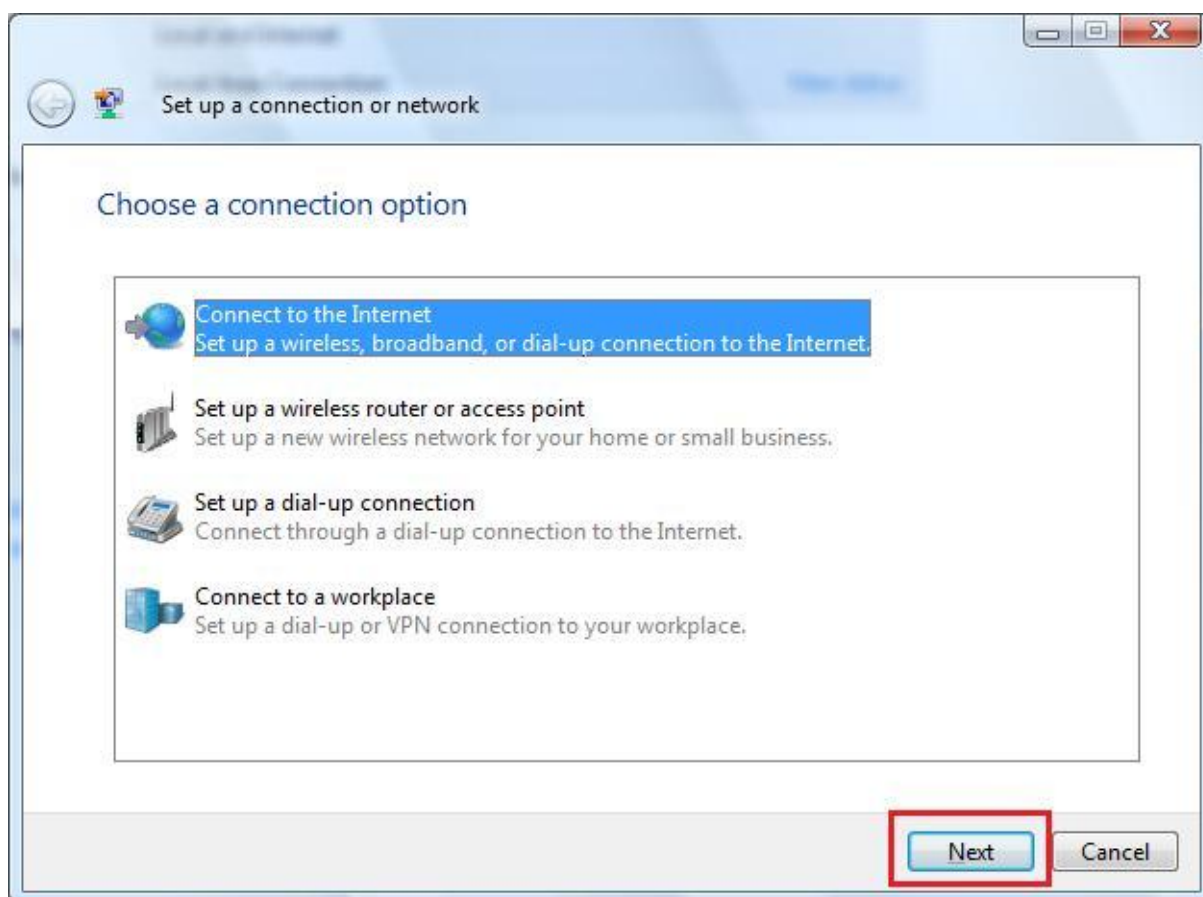
Zatim kliknuti na **Classic View (Klasični prikaz)** u izborniku na lijevoj strani te kliknuti na **Network and Sharing Center (Centar za mreže i dijeljenje)**.



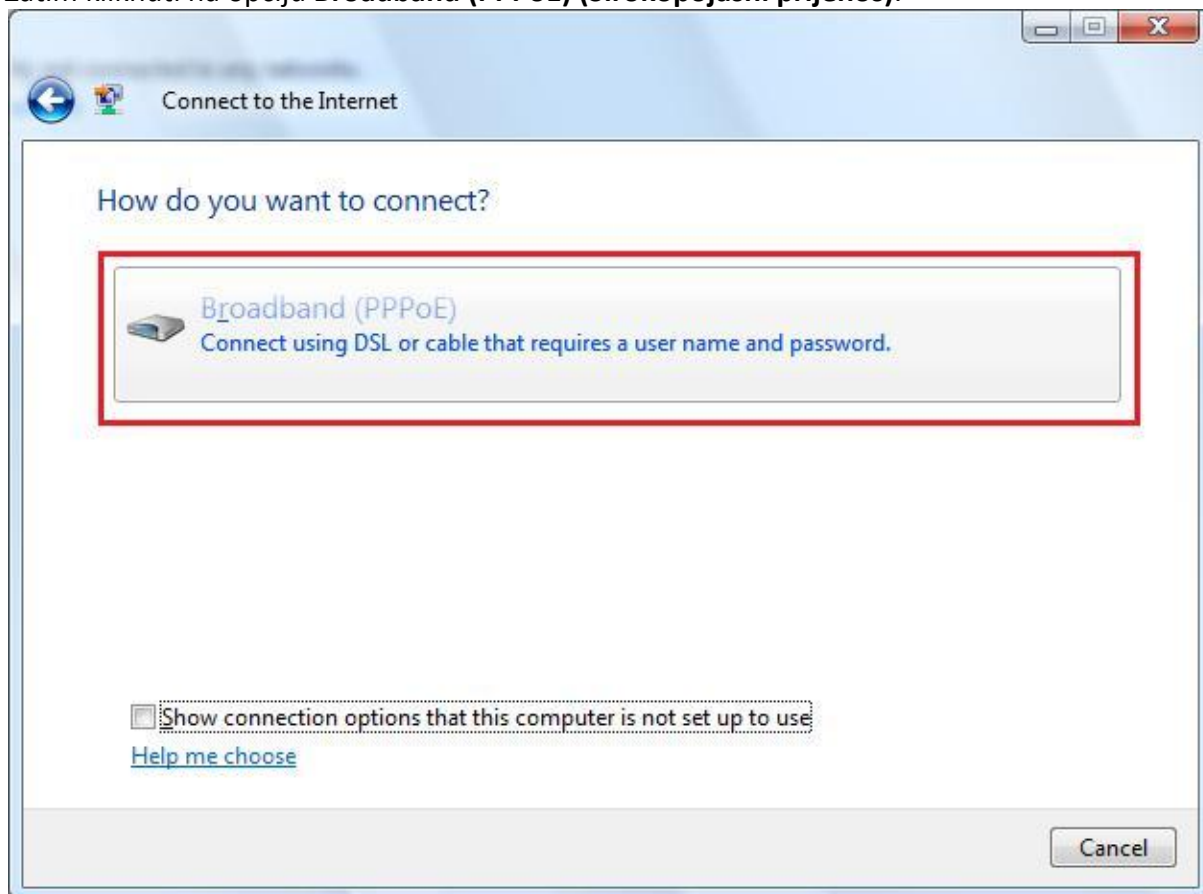
U prozoru koji se otvori potrebno je kliknuti na **Set up a connection or network (Postavljanje nove veze ili mreže)**.



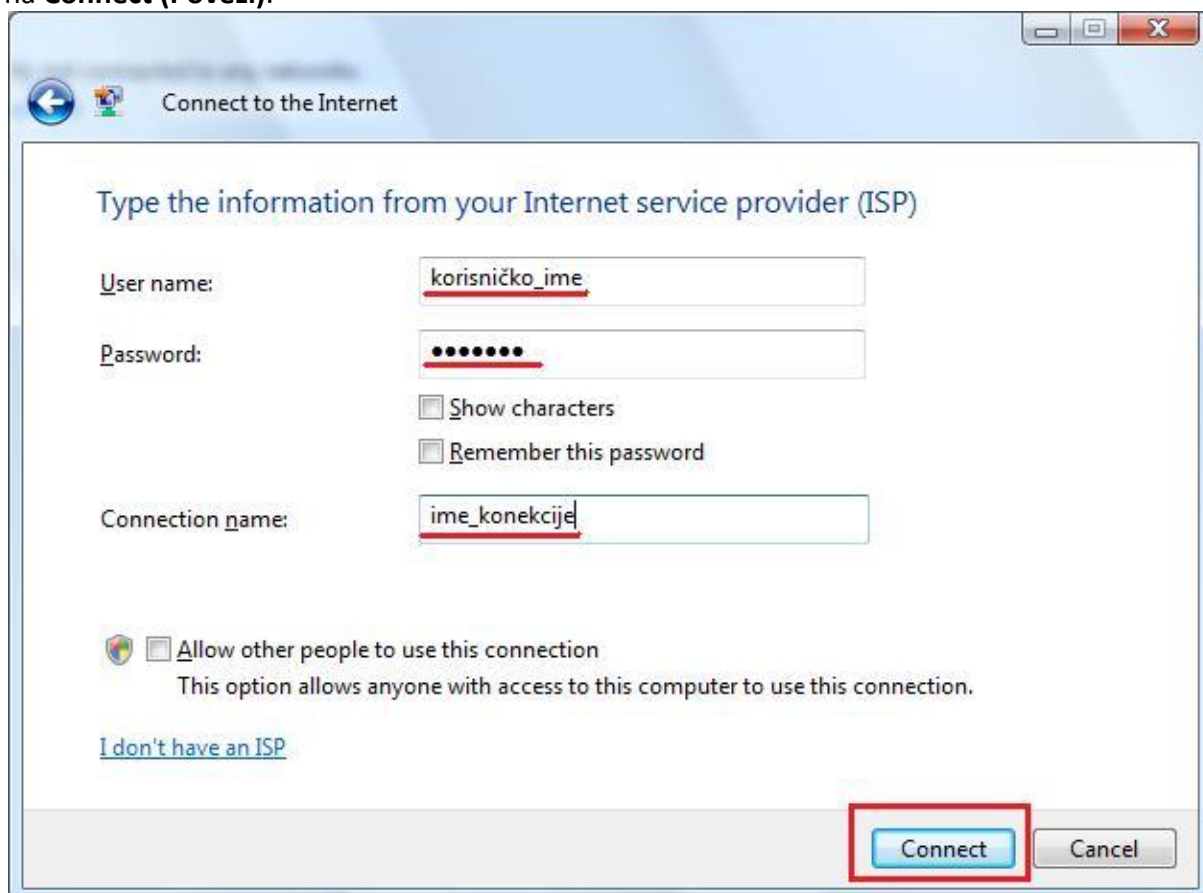
Izabrati opciju **Connect to the Internet (Povezivanje s Internetom)** i kliknuti na **Next (Dalje)**.



Zatim kliknuti na opciju **Broadband (PPPoE) (Širokopojasni prijenos)**.



U polje *User name* unijeti korisničko ime, a u polje *Password* lozinku koju ste dobili od HT-a. U polje **Connection name (Naziv veze)** unesite naziv vaše konekcije (npr. HT\_ADSL). Kliknite na **Connect (Poveži)**.



Connect to the Internet

Type the information from your Internet service provider (ISP)

User name:

Password:

Show characters

Remember this password

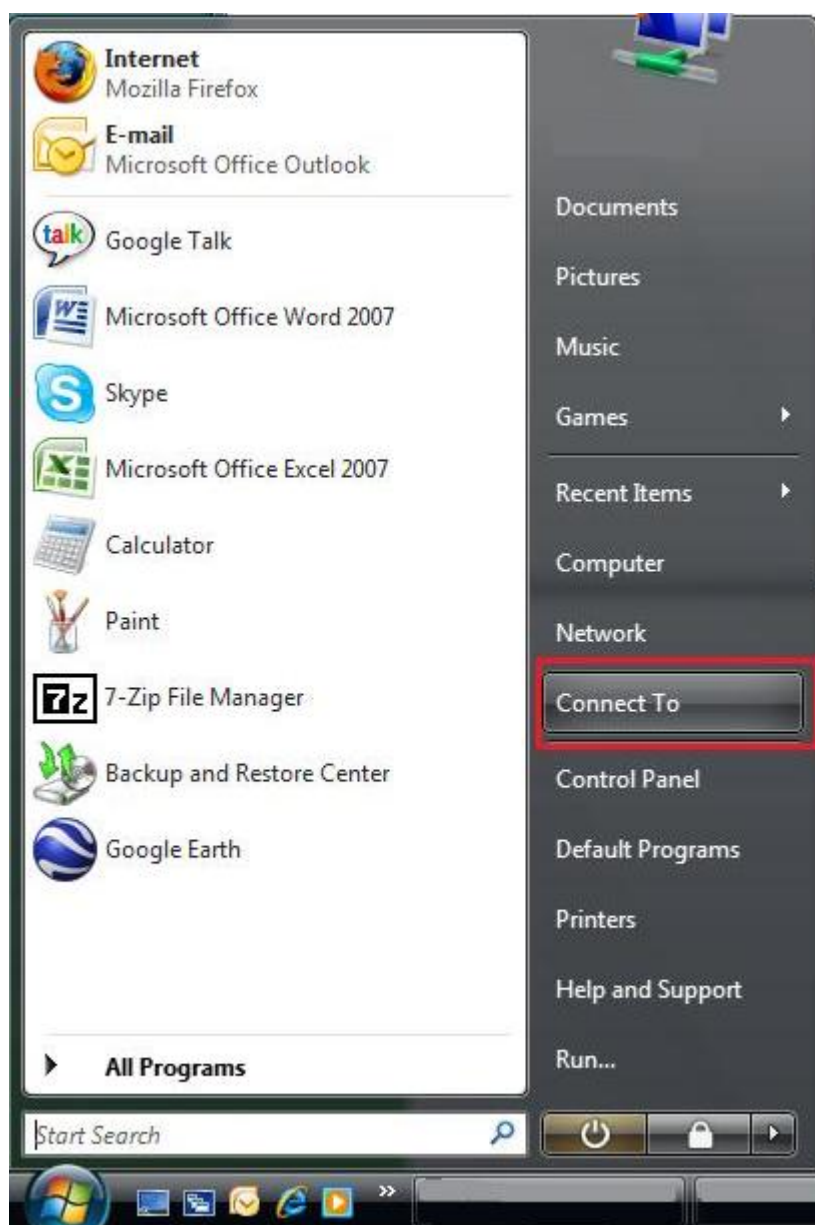
Connection name:

Allow other people to use this connection  
This option allows anyone with access to this computer to use this connection.

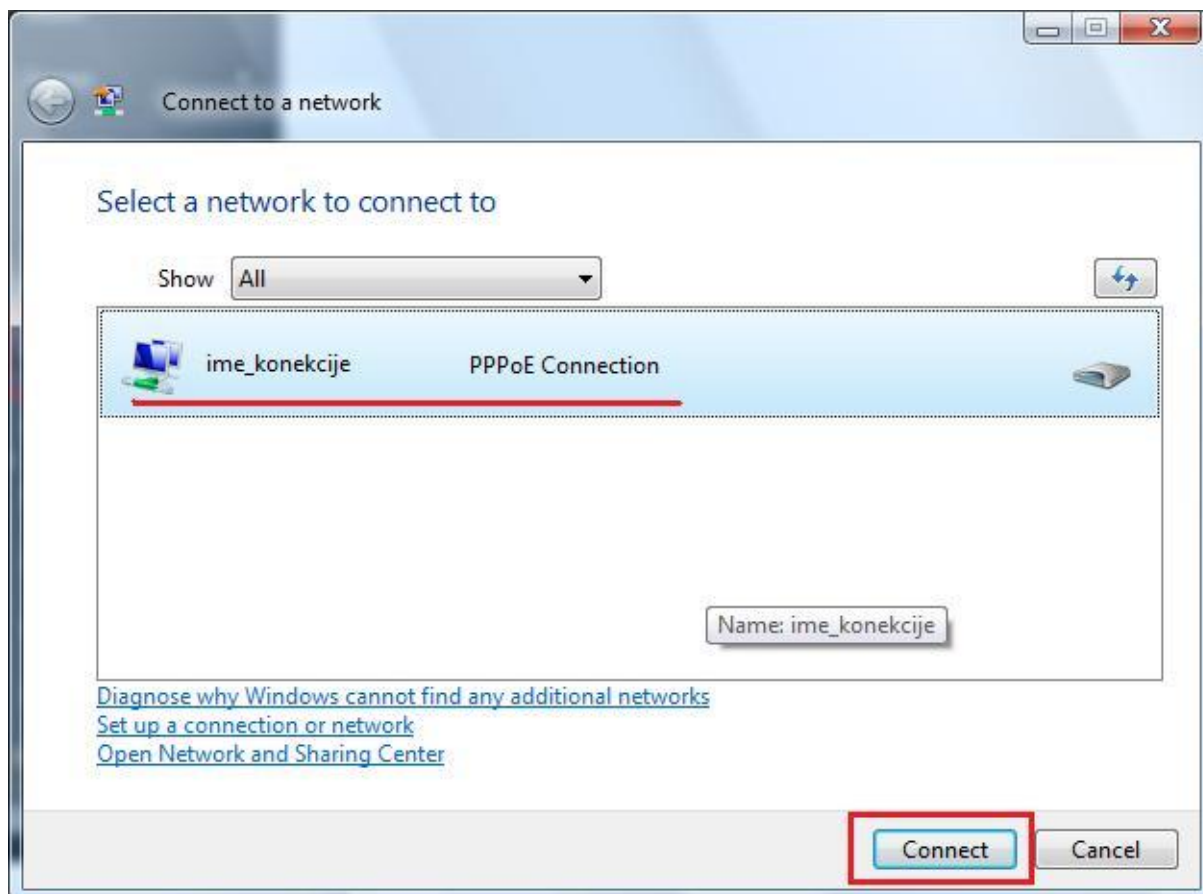
[I don't have an ISP](#)

## Povezivanje širokopojasnom konekcijom

Potrebno je otići na **Start → Connect To (Poveži sa)**.



Zatim je potrebno izabrati konekciju koju smo napravili i kliknuti na **Connect (Poveži)**.



Unesemo korisničko ime i lozinku. Ukoliko želimo, možemo sačuvati korisničko ime i lozinku stavljanjem kvačice u kvadratić *Save this user name and password for the following user (Zapamti korisničko ime i lozinku)*. Kliknemo na **Connect (Poveži)**.

