

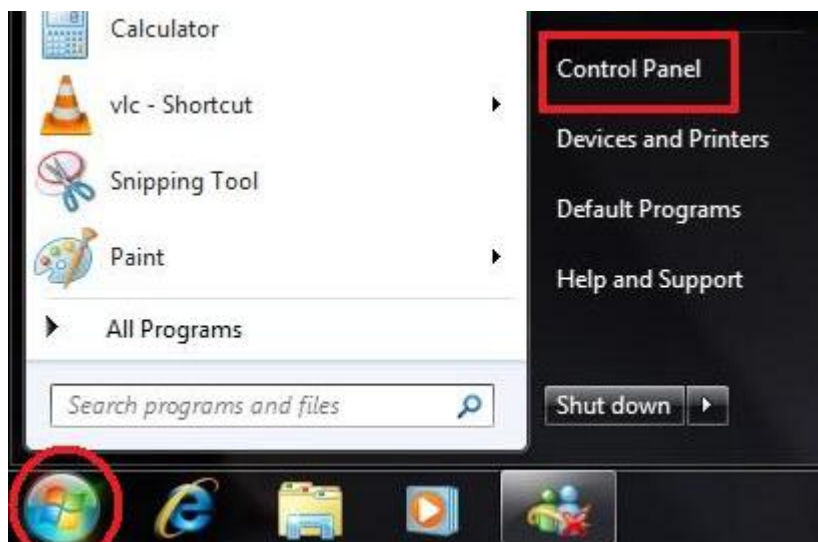
HT ERONET

Windows 7

Kreiranje ADSL konekcije

Kreiranje ADSL konekcije (Windows 7)

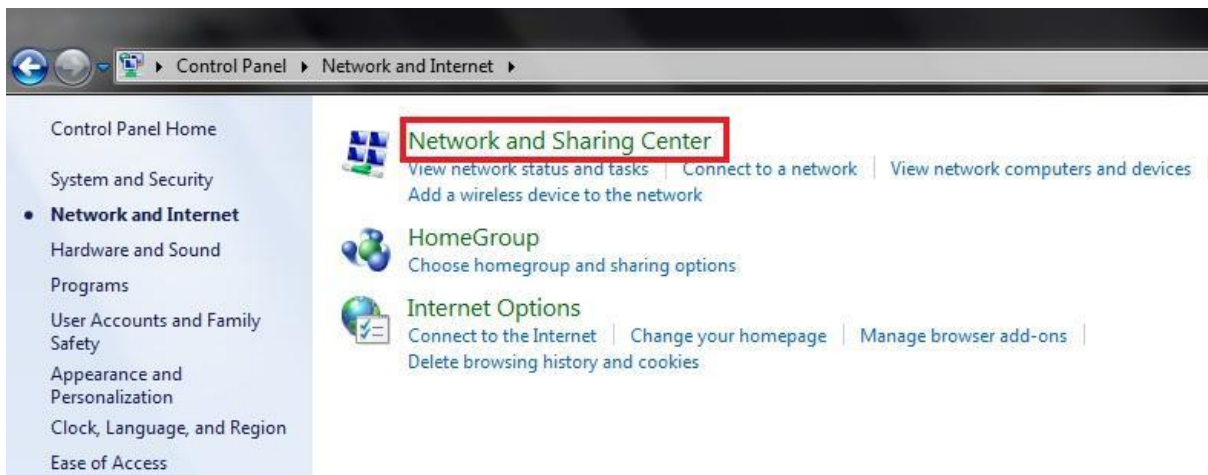
Potrebno je otići na **Start** → **Control Panel (Upravljačka ploča)**.



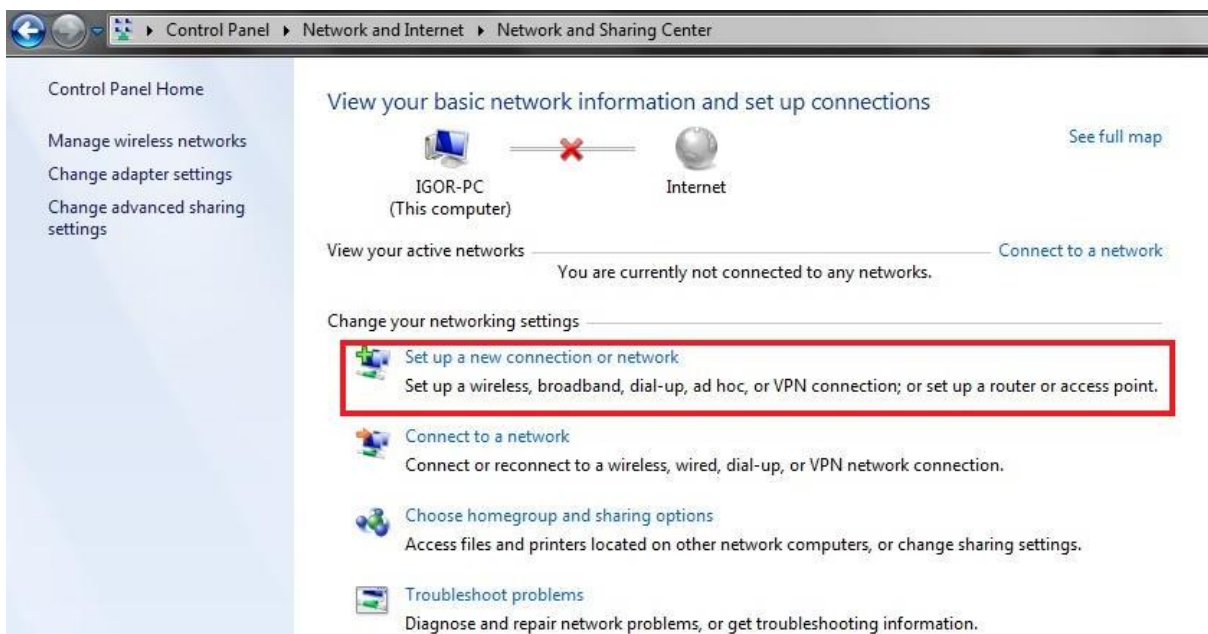
Zatim kliknuti na **Network and Internet (Internet i mreže)**.



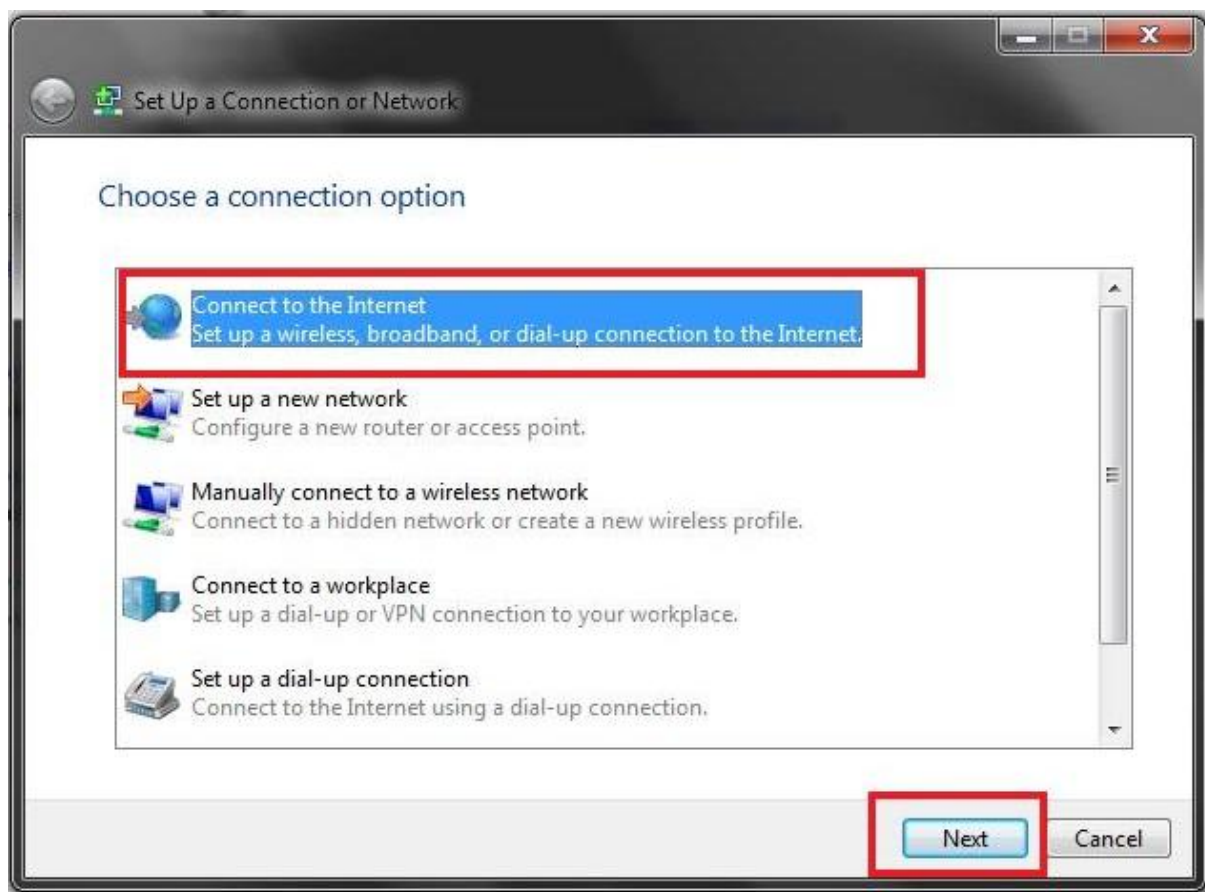
Nakon toga odaberi **Network and Sharing Center (Centar za mreže i zajedničko korištenje)**.



U prozoru koji se otvori kliknuti na **Set up a new connection or network (Postavljanje nove veze ili mreže)**.



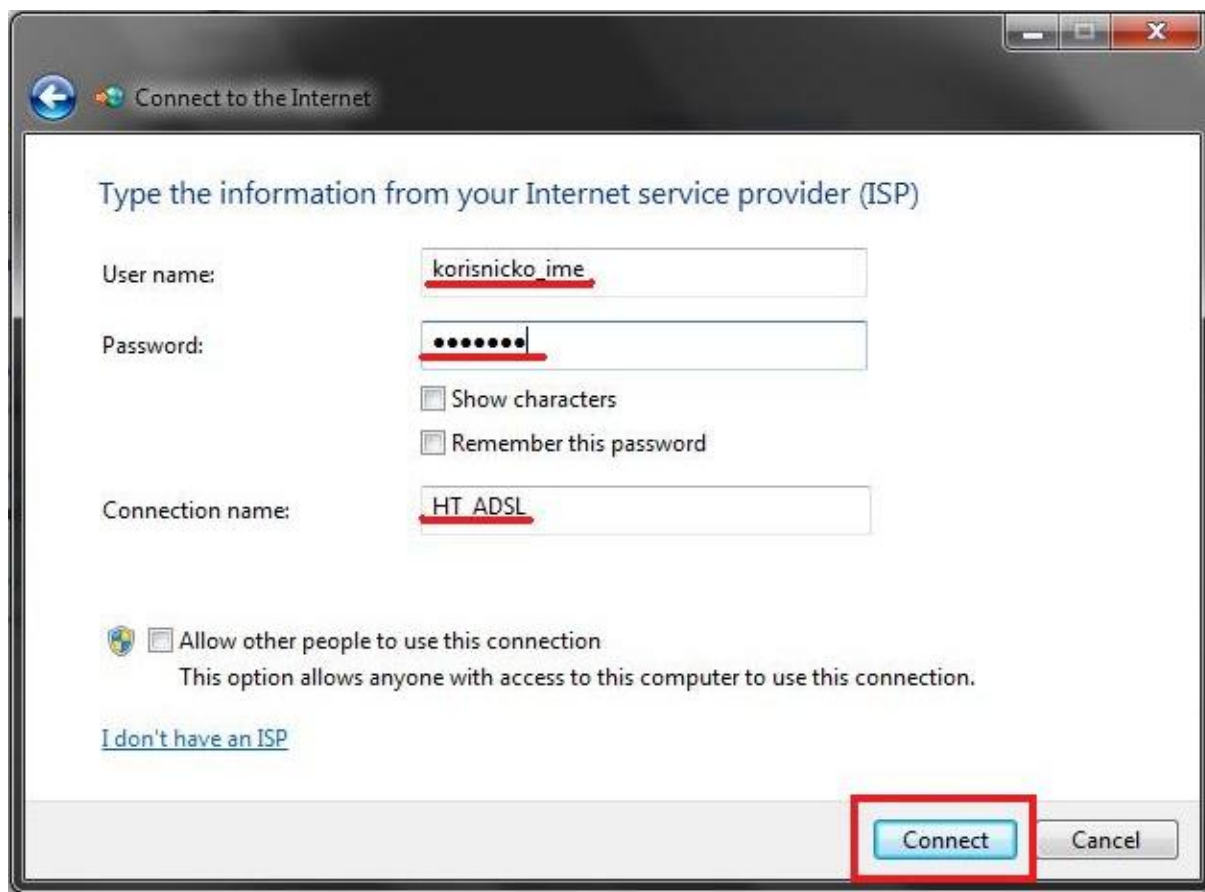
Odabрати opciju **Connect to the Internet (Povezivanje s Internetom)** i kliknuti **Next (Dalje)**.



Zatim kliknuti na opciju **Broadband (PPoE) (Širokopojasni prijenos)**.

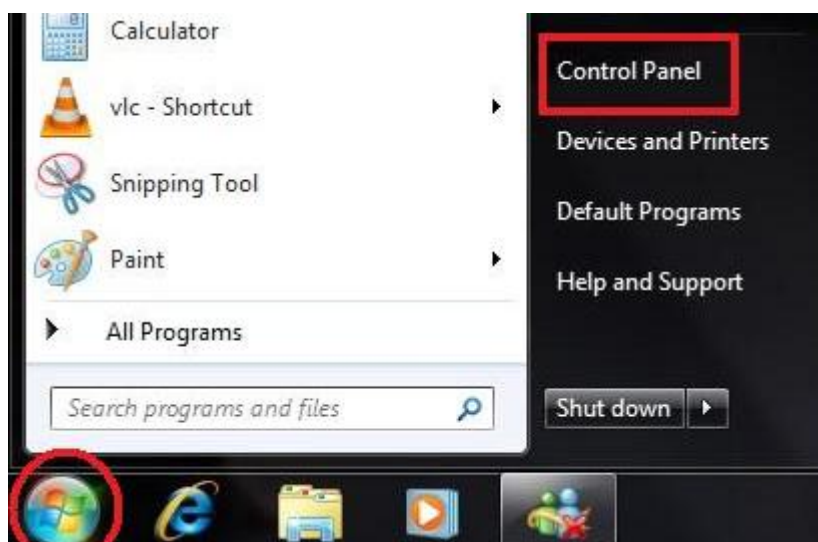


U polje **User name** unijeti korisničko ime, a u polje **Password** lozinku koju je korisnik dobio od HT-a. U polje **Connection name (Naziv veze)** unijeti naziv konekcije (npr. HT_ADSL). Kliknuti na **Connect (Poveži)**.

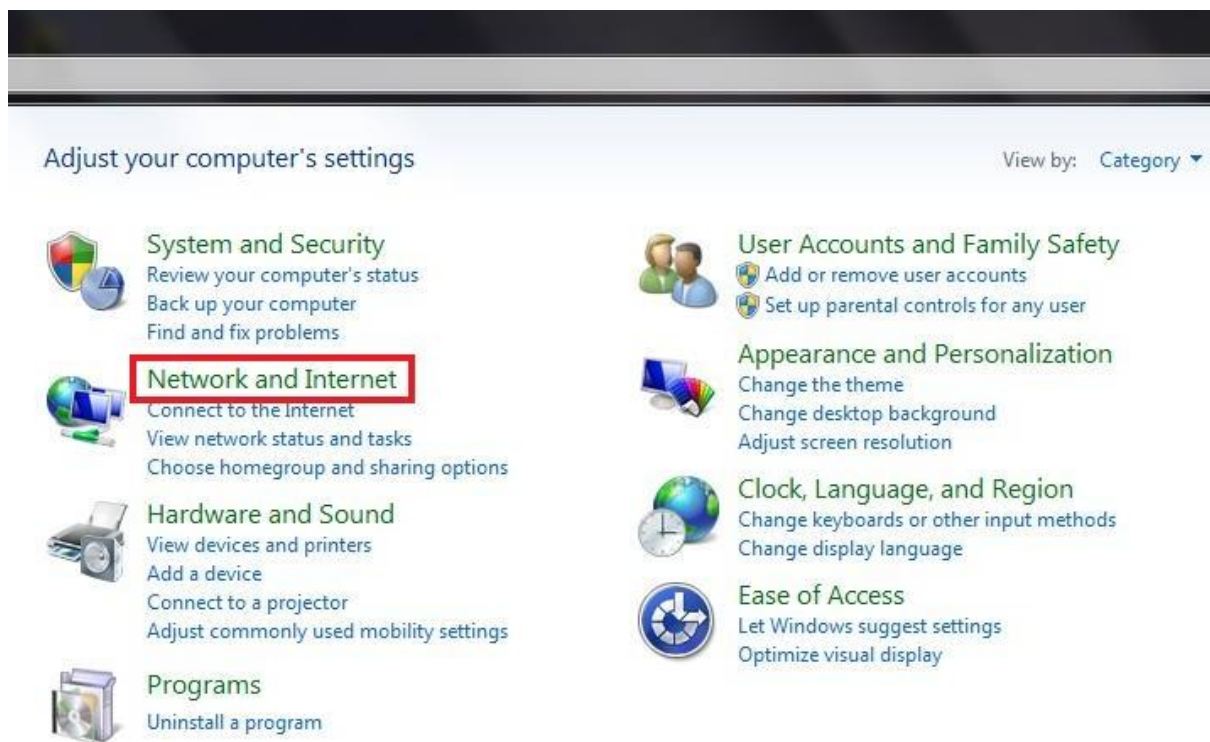


Povezivanje širokopojasnom konekcijom

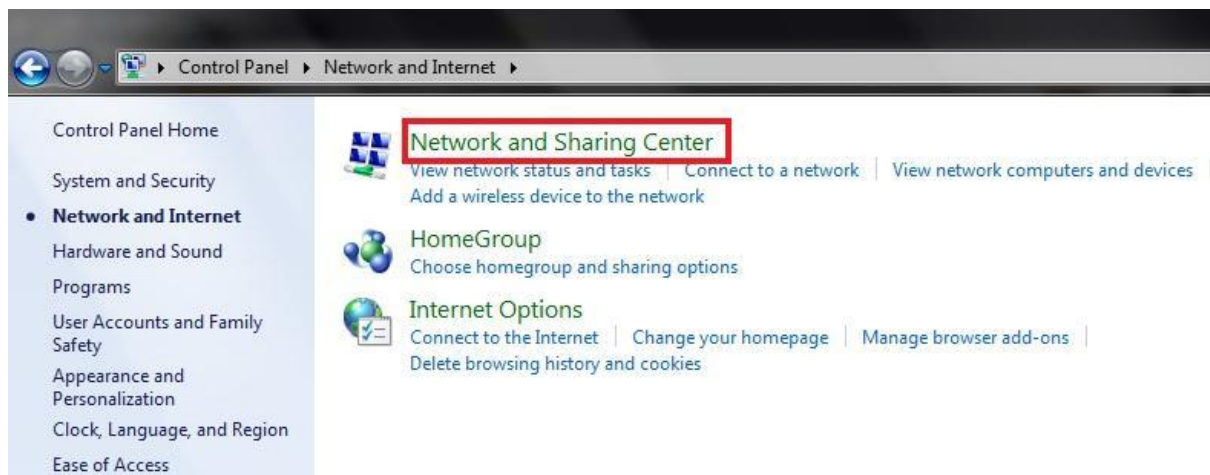
Potrebno je otići na **Start** → **Control Panel (Upravljačka ploča)**.



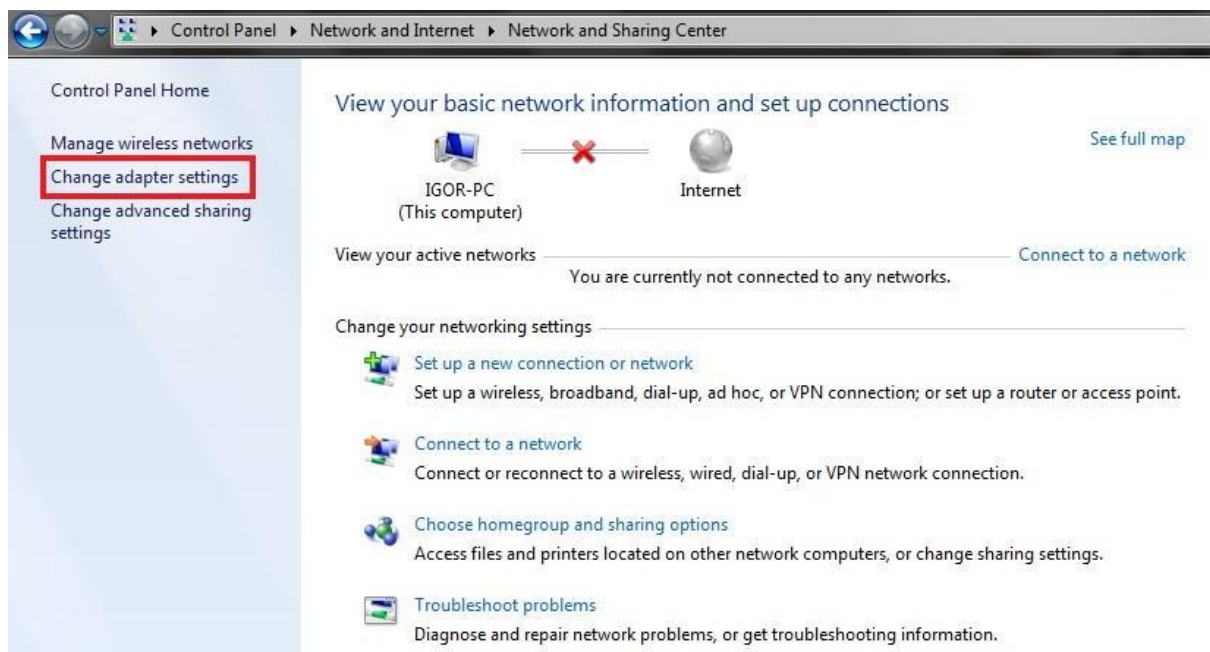
Zatim kliknuti na **Network and Internet (Internet i mreže)**.



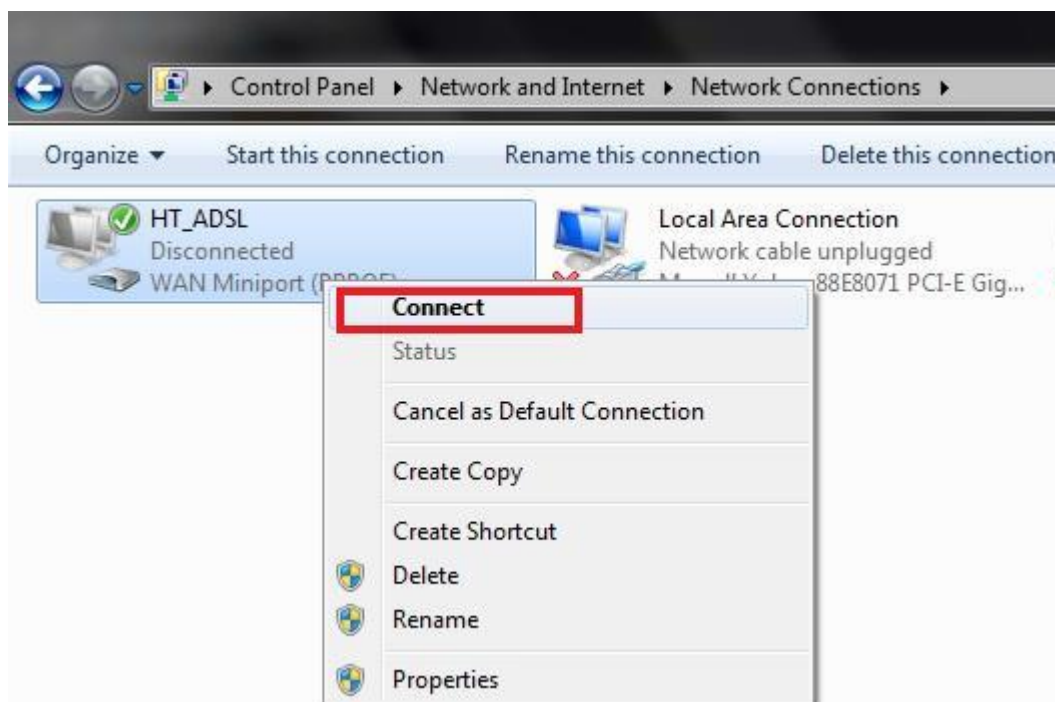
Nakon toga odabrati **Network and Sharing Center (Centar za mreže i zajedničko korištenje)**



U izborniku sa lijeve strane kliknuti na **Change adapter settings (Promijeni postavke adaptera)**.



Kliknuti desnom tipkom na širokopoljasnu konekciju (HT_ADSSL) i kliknuti **Connect (Poveži)**.



Unesemo korisničko ime i lozinku. Ako želimo sačuvati korisničko ime i lozinku stavimo kvačicu u kvadratić kraj opcije **Save this user name and password for the following user (Zapamti korisničko ime i lozinku)**. Zatim kliknemo na **Connect (Poveži)**.

